

AMERICA A Quilts A creatively

P.O. Box 458012

702

Fine Quilting Techniques Keepsake Pillow Expert Hand Quilting

Fine Quilting Techniques

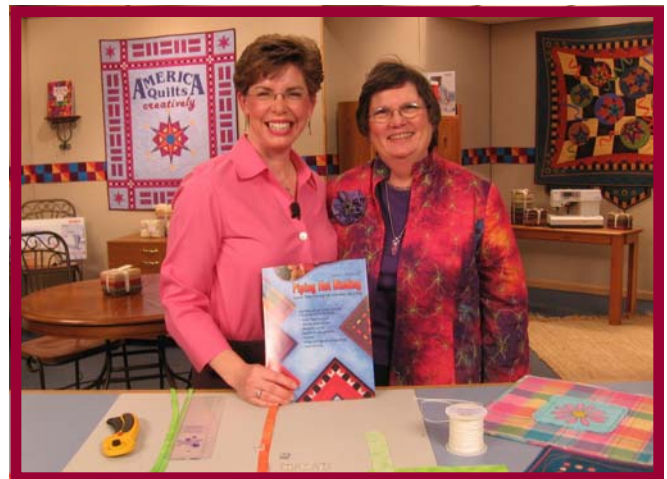
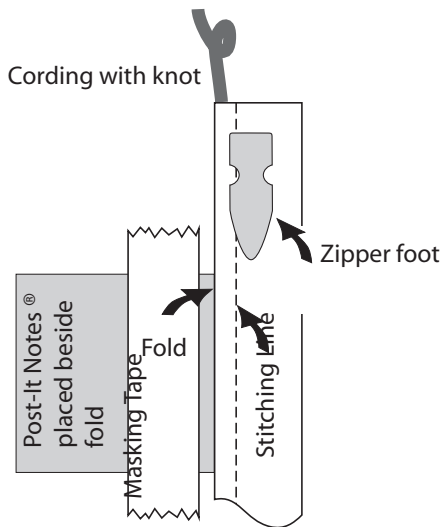
Perfectly Piped Binding

Follow these steps for perfect binding with piping:

- Press binding strip wrong sides together.
- Preshrink cording by passing steam over it.
- Press piping strip wrong sides together.
- Thread with color to match piping fabric. Stitch length of 2.0.

Machines with optional needle positions but no Piping Foot with groove:

1. Place the zipper foot on the machine with the needle to the left of the foot.
2. Tuck the cording in the fold of the piping strip. Concentrate only on the first few inches of cording/fabric.
3. Place the soon-to-be piping under the zipper foot with the fold/cording to the left (seam allowance to the right) and the ledge on the bottom of the foot up against the cording. If your foot has no ledge, place the edge of the foot against the cording.
4. Lower the needle to see if it will stitch next to the cording. If it does not, adjust the needle position to the right or left so that the needle will enter the fabric next to the cording without catching it.
5. Place a stack of about 8 Post-It Notes® on the bed of the machine next to the fold (sticky edge towards piping) and secure to the bed of the machine with masking tape. This will help guide the piping into the machine and give you something to pull against as you pull the cording into the fold.
6. Sew the length of the piping by pulling the cording into the fold and sewing a few inches at a time.



Susan Cleveland and Sue Hausmann

Sewing Supplies:

- Pfaff Sewing Machine with IDT
- Piping Hot Binding Tool #140000971
- Pfaff Open Toe Applique Foot 9mm #820213096
- Pfaff Piping Foot #820352096
- Pfaff Zipper Foot #820248096
- Pfaff Five Groove Pintuck Foot #820226096
- Pfaff Applique Foot #820214096
- Rotary Cutter and Mat
- Quilt sandwich with extra backing and batting untrimmed
- 2 1/2" binding strips spliced with a diagonal seam pressed open, length should be quilt perimeter plus approximately 10" (bias for curved edges, straight of grain is OK for straight edges, but bias is preferred) This may seem wide to you, but please note the comments in "Finish back of quilt" before making a change.
- 1 1/4" piping strips spliced with a diagonal seam pressed open, length should be quilt perimeter plus approximately 6"...Please note piping strips MUST be cut on the 45 degree bias
- 1 mm drapery cording, length should be quilt perimeter plus 12"
- Post-It Notes
- Masking Tape

Machines with Piping Foot with Groove:

1. Snap on your Piping Foot.

2. Tuck the cording into the fold of the piping strip.

Concentrate only on the first few inches of cording/fabric.

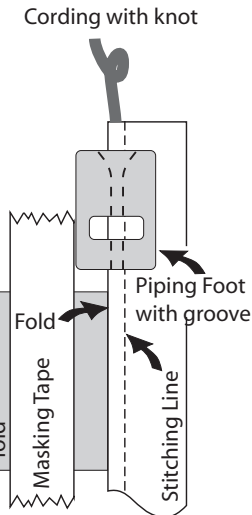
3. Place the soon-to-be piping under the groove of the foot with the fold to the left (seam allowance to the right) and the cording under the groove.

4. Adjust the needle position to the right and lower the needle to see if it will stitch next to the cording. If it does not, adjust the needle position

to the right or left so that the needle will enter the fabric next to the cording without catching it.

5. Place a stack of about 8 Post-It Notes® on the bed of the machine next to the fold (sticky edge towards piping) and secure to the bed of the machine with masking tape. This will help guide the piping into the machine and give you something to pull against as you pull the cording into the fold.

6. Sew the length of the piping by pulling the cording into the fold and sewing a few inches at a time.



•Trim piping seam allowance to 1/4" with the Groovin' Piping Trimming Tool and a rotary cutter. The groove on the underside is the key to perfect piping.

Prepare Quilt:

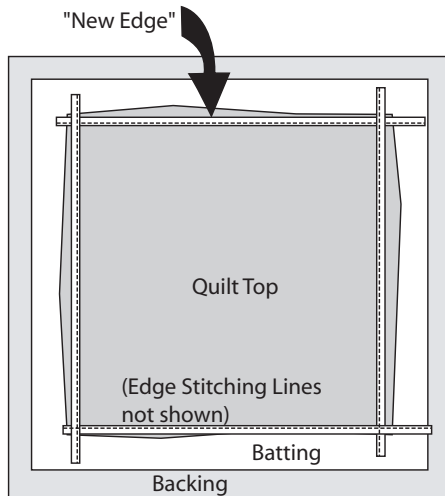
1. Quilt the quilt.

2. Draw new edge for quilt. Quilts distort during quilting, so new lines are needed to use as a guide for piping placement. Do not cut off extra batting and backing.

Apply Piping:

Piping will be applied to quilt one edge at a time and will extend beyond finished quilt edges.

1. Lay piping along new marked edge with cut edge of piping against drawn line and cording toward center of quilt. Allow some extra piping at the starting point.



2. Stitch over piping stitching line as close as possible using bobbin thread that contrasts with quilt backing. Match top thread to piping fabric and use stitch length of 2.0.

3. Assure that extra piping extends beyond edge of the finished quilt at corners.

4. Trim extra backing and batting. For straight-edged quilts, the Groovin' Piping Trimming Tool may be used.

Apply Binding:

1. As shown, lay binding over piping.

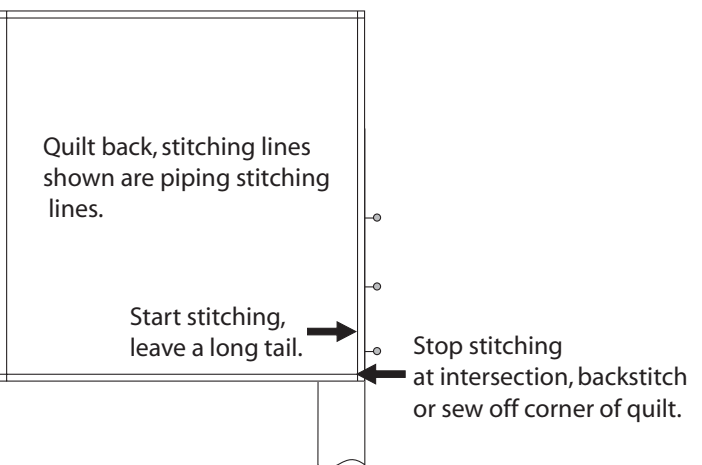
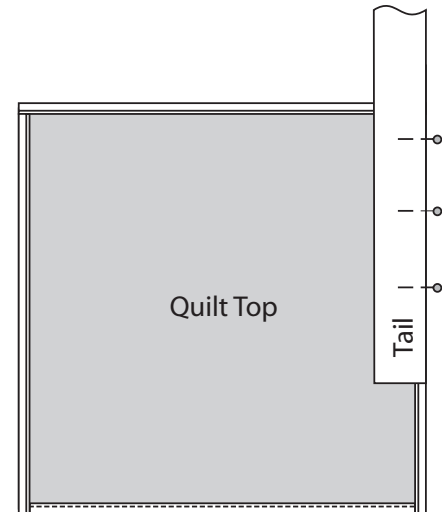
Line up raw edges of folded binding with raw edge of quilt. Please note that this orientation is probably different than what you've done in the past! It may feel backward.

2. Pin in place.

3. Here's the trick to having nice even piping showing on the front!

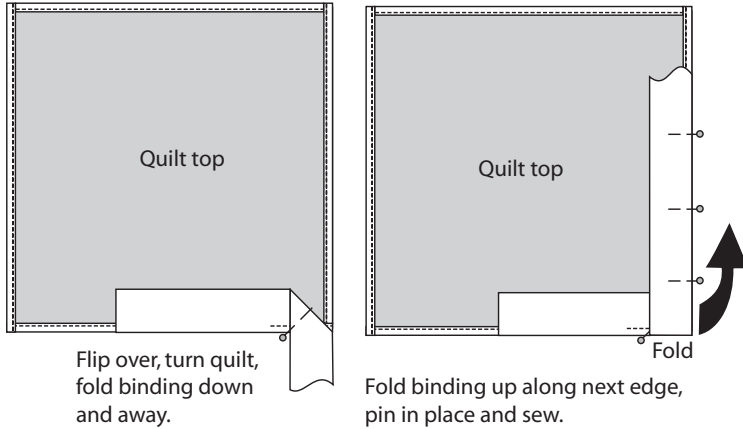
Turn the quilt over so the binding is on the bottom. Leave 6-8" of loose tail and begin stitching.

Stitch one thread left of stitching which attaches piping to quilt. Stop at intersection of piping stitching lines and either backstitch or turn quilt and sew diagonally to corner of the quilt. Experiment with different feet to determine which foot works best for you.



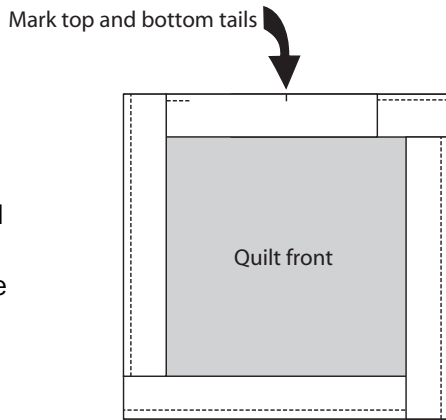
4. Remove quilt from machine and cut threads. Turn corners as shown.

5. Flip quilt over so quilt top is up and turn it as shown in diagram. Flip binding away from next edge to be sewn, then up onto next edge and pin. Make sure short fold at corner is at very edge of quilt sandwich. Continue with each side sewing with quilt backing on top beginning at raw edge and stopping at piping stitching intersection. After last corner, stop 8" - 10" before reaching starting point. You'll appreciate having long tails later.



Join Binding Tails (Kiss, twist, wiggle):

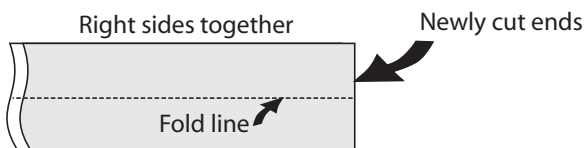
1. Lay tails on top of one another along edge of quilt and choose a match point about mid-way between stitching starting and stopping points. Make a mark on each tail at the raw edge where they match. One mark should be directly on top of the other. These marks will only be used to determine where to cut tails. See Diagram.



2. To determine where to cut the tails, measure width of folded binding, add 1/8" and cut this distance BEYOND marks. Marks should remain attached to quilt...they should not be cut off. (For binding cut 2 1/2" in width and measuring 1 1/4" folded, cut tails 1 3/8" from the marks.)

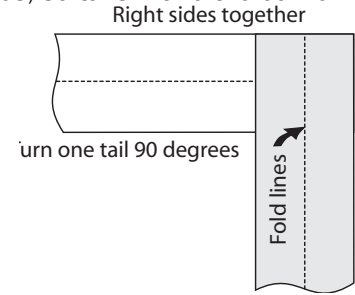
Lay tails on top of one another and mark tails

3. UNFOLD TAILS, place them right sides together matching ends. (Kiss) See Diagram.

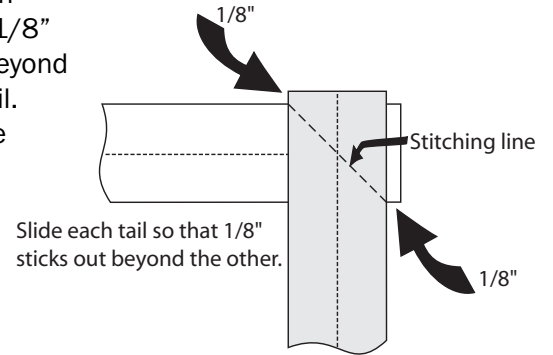


Unfold tails, place right sides together matching the ends.

4. Turn one tail 90 degrees, so tails make the corner of a square. If this is awkward because tails are not long enough, remove some binding stitches so there is more loose tail to work with. (Twist) See Diagram.



5. Slide each tail so that 1/8" sticks out beyond the other tail. (Wiggle) See Diagram.



6. Sew the diagonal seam as shown from crevasse to crevasse with small stitches and finger press seam open. Before trimming seam allowance, test length of the binding by folding binding and laying it along quilt edge, when you see that it is correct, trim the seam allowance to about 1/4".

Finish Applying Binding:

1. Lay remaining binding along edge of quilt and pin in place.
2. Flip quilt over and stitch one thread left of piping stitching line to finish applying binding.

Finish Back of Quilt:

At one time we were taught to wrap the binding to the back of the quilt only to the stitching line, but Susan recommends doing this differently. It is very important that binding be stuffed with quilt top, batting and backing. If this is true (and we intend to wrap the binding to the back only to the stitching line), then a different width of binding is required for each quilt top, batting, backing combination! Why not cut the binding a bit generously then wrap the binding as far as it needs to go to create a plump, stuffed binding? An added benefit to this is that the corners are much easier to miter with the extra fabric on the back!

Sew...

1. Wrap the binding to the back of the quilt as far as possible without bunching up the batting etc. Hold in place with binding clips.
2. Hand stitch in place. Place a few stitches in the miters both on the front and on the back.

Techn Corner Tip

Keepsake Pillow

What is more special than a baby? Lynne Farris showed how to make a special pillow for that special photo.

Here's How!

1. Use colored markers to create five coordinated designs on 8 1/2" x 11 sheets of white paper.
2. Copy and print or scan, save and print designs onto five Printed Treasures Sheets.
3. Print two 4 x 6 inch photos onto one Printed Treasures sheet.
4. Cut out borders and corners from three of the sheets you printed and use other two full sheets for main center panels on front and back of pillow, using cutting templates as a guide. The front of the pillow and the back of the pillow are the same, just using different prints.

5. Piece together the pillow front and back using 1/4" seam allowances. Cut out, center and sew printed fabric photos onto front and back of pillow.

6. Add Ribbons to the front if desired.

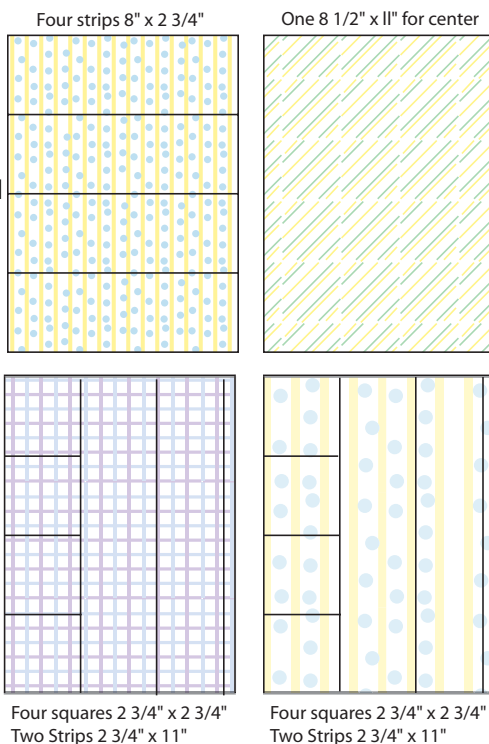
Sew Jumbo Rick Rack trim over all seams, catching edges of ribbon in stitching.

7. Pin Rick Rack over seam line around outer edge of pillow. Stitch to secure.

8. Pin pillow front to pillow back, right sides facing. Sew around outer edges of pillow leaving a 3 inch opening for filling.

9. Fill pillow with polyester fiberfill. Add felt and button embellishments as desired.

10. Close the hole with Steam-a-Seam or hand slipstitch.



Joe Hesch, Lynne Farris and Sue Hausmann

Sewing Supplies:

- Pfaff Sewing Machine
- Printed Treasures Pillow Kit
- Two packages of Printed Treasure by Milliken #140002437 (5 pack)
- Or Printed Treasure by Milliken #140002438 (50 pack)
- Assorted ribbons
- Three Packages of Jumbo Rick Rack
- Sewing Thread
- Polyfil Stuffing
- Steam-A-Seam or hand needle

HINT: When pulling off the backing paper after printing, don't pull from just one corner, pull on grain down. This prevents the fabric from being pulled off grain or distorted.



What's New to Do

Expert Hand Quilting

Judy Morton shared her hand quilting tips! Visit www.coatsandclark.com for lots of tips and information on all kinds of quilting with Coats and Clarks large variety of different threads.

As you can see, Judy is an expert hand quilter, who has won many awards! Her quilting is beautiful, precise and truly a work of art!



Judy Morton and Sue Hausmann



Sewing Supplies:

- Coats 100% Cotton Thread
- Dual Duty Plus Thread
- Star Multicolor Quilting and Craft Thread
- Quilting Thread, Long Arm
- Michael James Needles for applique
- Staw needles for Applique
- Roxanne needles for quilting

Thanks to our Underwriters:

PFAFF

www.pfaffusa.com



Coats & Clark

www.coatsandclark.com

**Printed
Treasures**
EST. 1988

www.printedtreasures.com