

AMERICA A Quilts A creatively

807

Dyeing to Create Quilt Fabric Colors and Prints and Get Squared

Dyeing to Create Quilt Fabric

Diane Giancola from Rit Dye brought a trendy raw edge appliqué pillow. It was such fun to see the different colors of dye on the same fabrics. Diane used a technique called over-dyeing. Selecting prints or solids, and then dyeing them with a color of Rit Dye.

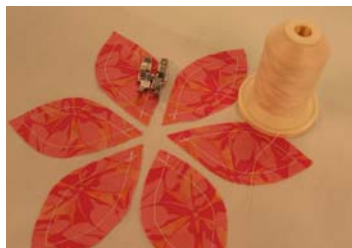


One benefit of over-dyeing fabrics is that you won't have the white back that so many prints have. The color goes all the way through so the fabric is pretty on both sides which is an advantage when doing raw edge appliqué and other techniques where you will see the wrong side of the fabric.

Diane makes the pillow first, then dyes it. Pre-wash the fabrics to remove sizing. You can dye cotton, linen, silk, rayon, blends of polyester. Diane's blouse was a blend of rayon and poly and the synthetic blend fabric produced a lighter color than the white cotton when the same color Rit Dye, Aquamarine, Diane's favorite color, was used.

To make the raw edge appliqué pillow, make a template of the flower petals and center from the pattern given. Cut two 13" squares of fabric for the pillow front and pillow back.

Cut six petals from one fabric and six from another fabric. Use white cotton thread not polyester, so the thread will take the dye as well.



Diane Giancola and Sue Hausmann

Sewing Supplies:

- Pfaff Sewing Machine
- 1/4" Right Guide Foot #820541096
- Rit Dye Liquid or Powder
- Metal Container for Dye Bath
- Robison Anton Cotton thread
- Chenille Brush
- Glue Stick
- Liquid Dishwashing Detergent
- Table Salt
- Rubber Gloves
- Old Plastic Tablecloth or Dropcloth

Use glue stick to hold the petals in place. Stitch down the first layer of petals using the 1/4" Right Guide Foot. Next, stitch down the center of the top flower petals. Embroider the center using the "twirly" design or stitch with straight stitch in a circle from the center out. The file for the "twirly" design can be found on the America quilts creatively web site.

Diane loves aquamarine! When she put the fabrics into the aquamarine dye, the results were great! The yellow turned a blue/green and the red turned purple! Each color was different and just as pretty as the one before. Chartreuse was a mixture of green and yellow. Color recipes can be found at www.ritdye.com.

There are four ways to dye: washing machine, for larger pieces, bucket dyeing, as was demonstrated on the show, stove top method for black or dark colors or microwave for marbling.

Protect your work surface with an old plastic tablecloth or dropcloth. Start by putting the fabric in warm water to wet it. It opens up the fibers and prepares them to accept the dye. Measure 1 teaspoon of dye in to a glass measuring cup. Add 1/4 cup table salt and a little dishwashing liquid. The salt and dishwashing liquid help the fabric accept the dye. Add 2 cups hot tap water. Stir until it dissolves and mixes completely.



Add to a tub with 2 gallons of hot tap water (140

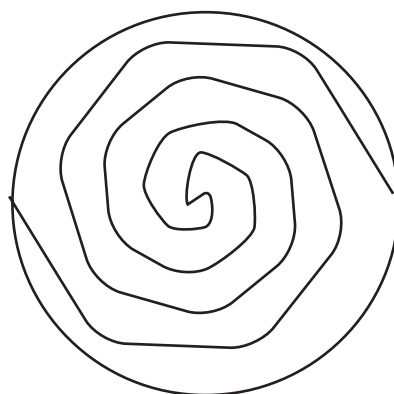
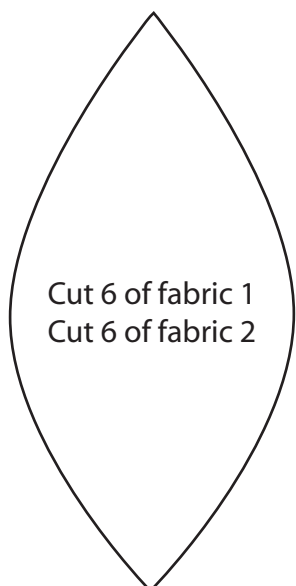
degrees). Add boiling water to tap water if your water isn't hot enough. Dye can stain plastic so use metal if you are concerned about the container.

Place the fabric into the dye bath. Move it around. It should stay in the dye bath for about 30 minutes. Keep moving the fabric in the dye bath.

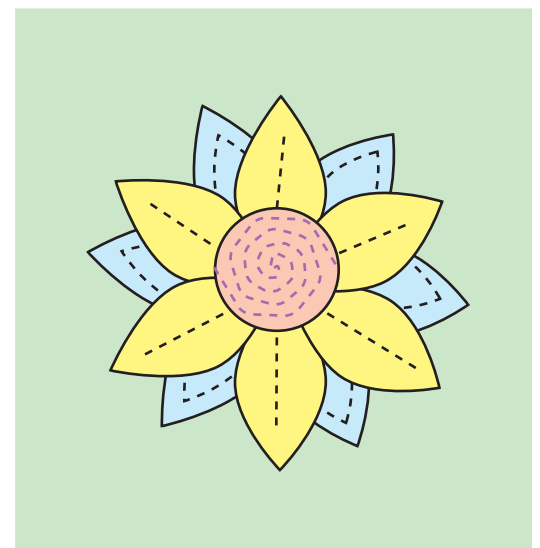
These measurements are for the three pieces that Diane dyed. Follow the instructions on the package. the instructions refer to the weight of the fabric. Diane pointed out that three yards is about 1 lb.

When the desired color is reached, rinse until the water runs clear.

After your pillow top and back are dry, press, press and brush with a chenille brush. Place the pillow front and back wrong sides together. Stitch 1/2 to 3/4" in from the edge leaving a 3" opening. Snip the exposed seam allowance every 1/4" to 1/2". Stop just short of the stitching. Stuff with polyfil and stitch the opening closed.



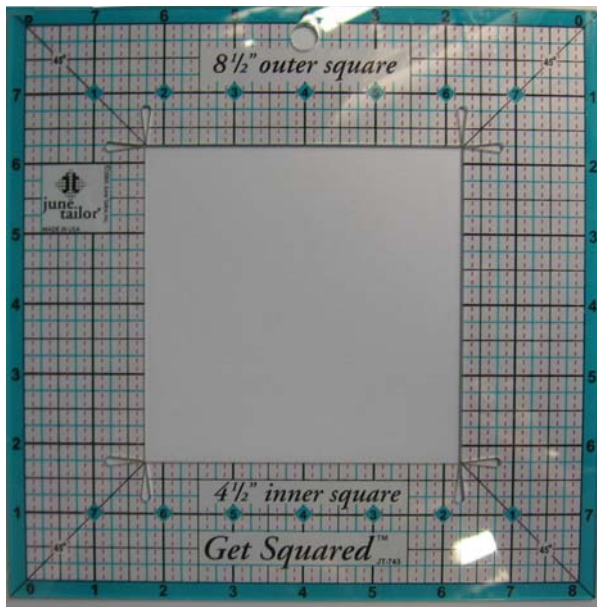
Cut 1 for center
mark stitching lines



What's New to Do

Get Squared

You spend a lot of time making blocks and it can be a challenge to get all the blocks in your quilt the same size. Jill has two "Get Squared" rulers each of which cuts two sizes of blocks. One has a 4 1/2" inner 8 1/2" outer square. Since you need a seam allowance, an 8" finished block is cut 8 1/2". The other has a 6 1/2" inner and 12 1/2" outer. The rulers have 45 degree marks in each corner and that will help you center the ruler on the block. The blue border on the ruler is the seam allowance. There are black 1" and 1/2" marks, teal for 1/4" marks and red for 1/8" marks.



Jill had a great tip, start the rotary cutting blade in the teardrop opening, then cut two sides, left and right, then rotate the mat and cut the other two.



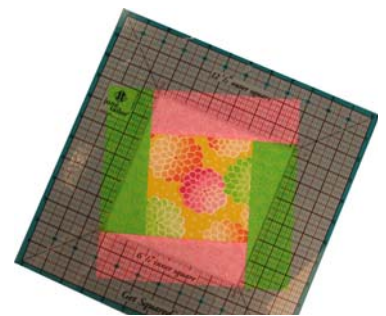
Sue Hausmann and Jill Repp

The rulers are great for fussy cutting. You can see exactly what your block will be. She cut one flower on grain and had no corners, and the other she cut on the bias and had corners!



You can also cut blocks off point as shown on the log cabin to create a unique quilt top from basic blocks.

What a great addition to your quilting supplies!



Thanks to our Underwriters:

www.ritdye.com



www.junetailor.com

